



of Somerset
Help and Hope for People Affected by Domestic Abuse.

Help & Hope

A Quarterly Newsletter from the lead agency in Somerset County for Victim Services and the Prevention of Domestic Violence

Winter, 2012
January—April Edition

Resource Center Administrative Offices Now in Refurbished Annex

November 21, 2011—On a warm and beautiful day just before Thanksgiving, a plan that had been in the works for over two years came to an end and was completed thanks to the generosity and hard work of Todd and Scott Van Cleef of Country Classics of Hillsborough.

The Annex at the Resource Center was officially open for business with a ribbon cutting ceremony presided over by Hillsborough Mayor Gloria McCauley and the people who made this dream come true—Todd and Scott Van Cleef of Country Classics at Hillsborough along with Project Manager Jeff Coe and Coordinator Kathy Crosby.

The Van Cleefs recognized

the needs of our agency and knew what they could do to help. Country Classics has a long history of providing support to groups and organizations in the community.

Their proposal was to renovate the previously occupied offices at their own expense as a donation to improve the lives of victims and survivors of domestic abuse. They developed a design plan and worked with the officials in Hillsborough Township to make this dream a reality.

The pride in achievement, professionalism and



generosity exhibited by everyone involved in this project is testament to the spirit of community caring that allows our agency to provide the critical services so vital to the empowerment of survivors of domestic abuse.

More photos on page 4.

RCS “Quick Facts”

- **1 in 4** women will be victims of domestic violence in her life.
- **1 in 5** households experience domestic violence on a regular basis. With 326,869 households in Somerset County, over 65,000 have the potential to be a dangerous environment.
- Over **1,100** clients received services through the Resource Center’s programs in 2011.
- In 2010, police in Somerset County conducted **2317** domestic violence investigations with **565** arrests. An additional **116** arrests were made for violations of restraining orders. (2010 NJ State Police Uniform Crime Report)
- **1 in 5** tweens (age 11 to 14) say their friends are victims of dating violence and nearly half who are in relationships know friends who are being verbally abused.

Help & Hope Has a New Look

2012 begins the third year of publication of the Resource Center of Somerset’s newsletter, Help & Hope, and we are giving it a makeover. We will continue to bring you updates about events and the activities of the agency, spotlight volunteers and survivors of domestic abuse, and let you know how you can make a difference in the community by supporting

the work we do to improve the lives of the women and children and men affected by abusive relationships.

We expect that our new format will allow us to bring you more articles, more photos and more information. In future issues, we plan to have articles contributed by guest writers, people from the community who share our

concerns and vision to provide help and hope to people affected by domestic abuse.

You comments and concerns are always welcome. Please feel free to contact:

Anthony J. Winchatz
Director of Marketing and Public Relations
Resource Center of Somerset
awinchatz@resourcecenterofsomerset.org



A Message from the Executive Director Paloma Amar Coleman, MFT, LPC

It's a new year, and as we begin our 34th year of providing services to people affected by domestic abuse, I find myself reflecting on our accomplishments and our expectations.

We have consistently experienced increases in the number of people in abusive relationships seeking services through our 24-hour hotline, our outreach program and our legal advocacy services in the courts. Our dedicated staff continues to work with our clients to develop solutions that empower them to find a more stable and rewarding life, free of violence and abuse.

Community partners, from corporations and small businesses to civic and student groups, have helped support the work we do. Country Classics at Hillsborough provided us with a much needed renovation of our annex office space, and students at Montgomery High School are helping educate other students about safe dating practices and how to

avoid or prevent dangerous relationships. These are but two of multiple examples. We welcome new supporters and partnerships every week and are extremely grateful for a caring community.

The need for the expansion of our services comes with higher financial responsibility. Since all our services are provided free-of-charge, virtually all our support comes from government and private foundation grants, fund raising events and donations from caring people in the community. In these difficult economic times, grant funding is severely reduced and we must rely even more upon the community to help provide for the safety and well-being of our neighbors.

The Resource Center is careful to steward every dollar that comes into the agency to ensure quality services. Consider this, \$51 pays for an hour of counseling or legal advocacy, while \$136 pays for a night of safety at our shelter. Please continue your



support and help us empower those who suffer in abusive relationships to restore a peaceful life.

In Memoriam

Ellen Pence
1948-2012

Ellen was a pioneer in creating and promoting innovative strategies to deal with domestic abuse that changed the way violence towards women and children in the home is viewed.

She co-founded the Duluth Domestic Abuse Intervention Project, an inter-agency collaboration model used in all 50 states in the U.S. and over 17 countries.

Ellen Pence was a powerhouse who influenced the way law enforcement, social service and even advocacy organizations handle domestic violence.

Her legacy lives on
in the work we do.



Board of Trustees

Susan Kalison Karp
President

Jayne M. Geiger
First Vice President

Annamarie Simeone, Esq.
Second Vice President

David A. Williams, CPA
Treasurer

Gordie Jamieson
Assistant Treasurer

Mary Jo Altom
Secretary

Sheila M. Breeding

Jean W. Frydman, Esq.

Peter J. Jegou

Joanne Kavanaugh

Susan M. Root

Jane Sherry

Administration

Paloma Amar Coleman, MFT, LPC
Executive Director

Lisa Blum, LCSW, PhD.
Senior Director of Program Services

John Graf, Jr.
Director of Development

Newsletter Editor

Anthony J. Winchatz
*Director of Marketing
and Public Relations*

Member Agency



United Way of Northern New Jersey
Somerset County




Visit our website

www.resourcecenterofsomerset.org

Find information on domestic abuse and how you can help,
Volunteer Opportunities
and more.

You can now make an on-line donation to help support our programs and services



In Memoriam Peter J. Biondi Assemblyman—District 16 Advocate, Supporter, Friend



Assemblyman Peter J. Biondi passed away on November 10, 2011 after a courageous battle with cancer. Pete was a **critical member of the Resource Center of Somerset's Advisory Board**. In his quest to support our mission, he spoke frequently and passionately about the obligation of all in the Somerset community to work to prevent domestic violence through education, victim advocacy and, specifically, financial support of the Resource Center of Somerset.

During his distinguished tenure as Hillsborough Township Mayor, Somerset County Freeholder and New Jersey State Assemblyman, Pete sought out funding sources such as public grants, private

foundations, corporate donations and civic fund raisers, and channeled those contacts and funds to the Resource Center of Somerset. He saw to it that necessary funds were raised to support the programs and services aimed at empowering victims of abusive relationships. Pete was a good friend to the Resource Center and is missed.

Hillsborough Township Committee
1983-93

**Somerset County
Board of Chosen Freeholders**
1994-97

NJ State Assembly
1996—2011

For Pete's Sake—A Legacy for Peter J. Biondi

From the beginning of his political career, Pete used the battle cry, "*For Pete's Sake*" to rally his supporters and constituents to help elect him so he could help them. He was a true community leader full of community spirit.

Pete had a strong desire and heartfelt compassion to help victims of domestic abuse. He not only sought out funding from a variety of sources to benefit the Resource Center, but he was a personal supporter and contributor to the Resource Center whenever there was an opportunity to help. In 2010, the Resource Center named the Peter J. Biondi Community Service Award in his honor, presented to an individual or group for outstanding support and contributions through public service. The award honors the work of public officials in state, county or local government, law enforcement, social services or community activities.

To honor his efforts, we have established the **Peter J. Biondi Memorial Initiative for the Prevention of Domestic Violence in Somerset County**. Here is an opportunity for everyone who respected and supported Pete's community spirit to help continue to keep his passion alive. Each year, thousands of women, children and men receive services through our emergency shelter Victoria House, clinical outreach, legal advocacy, 24-hour hotline and community education programs.

Your donation to the Resource Center of Somerset in Pete's honor will support the much needed programs and services that provide help and hope for people affected by domestic abuse.

You can make a donation by visiting our website, www.resourcecenterofsomerset.org, and click on Pete's photo on the home page and follow the prompts.

You may also mail your contribution payable to the Resource Center of Somerset, Inc.

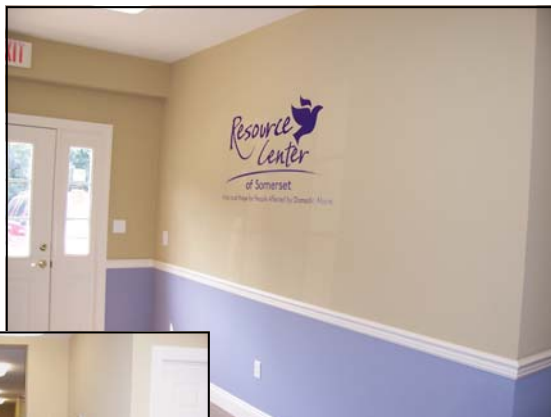
Resource Center of Somerset
For Pete's Sake
427 Homestead Road
Hillsborough, NJ 08844

The Resource Center of Somerset, Inc. is a recognized tax exempt organization under Internal Revenue Code Section 501(c)(3), and is a registered charity with the State of New Jersey. Employer Identification Number: 22-2205833 and NJ Charities Registration Number CH-0238900. Your donation is deductible to the full extent of the law. We encourage our supporters to check with their employer to see if they participate in a matching charitable contribution program.

Going Green! Our Fall 2012 issue of *Help & Hope* will be available exclusively on our website. Stay connected.



The ANNEX
Before...



...and After!

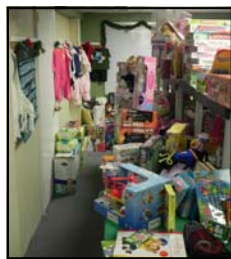


The renovations have created a comfortable environment where Help & Hope can thrive and survivors of domestic abuse can feel the comfort and safety they need for empowerment.



A Special Thank You! - Country Classics at Hillsborough Project Manager Jeff Coe, Vice President Scott Van Cleef and President Todd Van Cleef receive our Certificate of Appreciation from RCS Executive Director Paloma Amar Coleman for making our dream of much needed office space come true.

Friends of the Shelter



Decorating the Holiday Shop—The Friends of the Shelter helped bring the spirit of the holidays to the annual Holiday Shop at our Outreach Center. Clients and their children were able to select many wonderful presents to give to family members in celebration. Many of the wonderful gifts such as appliances and children's toys and clothes were donated by the Friends.

Friends of the Shelter is an all-volunteer organization of women sharing a commitment to assist women and children victims of domestic violence. Our service and fund raising efforts benefit the Resource Center of Somerset.

The Friends have raised and donated over \$1,500,000 to the Resource Center through Derby Day, Author Luncheons and concerts since founded in 1987.

All are welcome to attend and share our efforts to support the Resource Center of Somerset.

For more information: Friends of the Shelter, P.O. Box 23, Basking Ridge, NJ 07920

The Friends of the Shelter were as busy as ever this past season. On November 1st, the Friends held the annual Fall Luncheon at the Basking Ridge Country Club. The premium silent auction and specialty boutique proved to be a successful fund raiser once again. The guest speaker at the luncheon was Dr. Audrey Cross, nutritionist, lawyer, author and vigneronne, who had a lively discussion about "Wine, Women and Health".

Nine past presidents of the

Friends, from 1987 to 2011 were honored at the Resource Center's annual gala, "A Starry Night in London," with the Friends of the Shelter Humanitarian Award.

Not to attend a party empty-handed, they presented a check for \$90,000 representing their fund raising efforts and contributions to the Resource Center for 2011.

Their most recent project is the refurbishing of the

Victoria House living room, the emergency safe house for victims fleeing abusive relationships. They hope to wrap up this project by mid-Spring. Our staff and clients eagerly await the comfortable transformation they bring.



Friends of the Shelter Twenty-fourth Annual Derby Day Party

Saturday, May 5, 2012

Dinner, Exciting Auctions, Live Entertainment



Fiddler's Elbow Country Club

Bedminster

For more information contact us at:
friendsoftheshelter@hotmail.com



Scenes from Derby Day 2011

Bloomberg Associates Create “Cozy Comfort” for Holidays



Bloomberg

SKILLMAN, NJ—Associates at Bloomberg LP took time away from their daily routine of financial services to assemble “Cozy Comfort” gift bags to distribute to clients at the Resource Center of Somerset during the holidays.

Throughout the day, various work teams at Bloomberg spent an hour working together, learning about the community groups they were helping and getting a better understanding about just

how much their contribution was needed and appreciated.

RCS Executive Director Paloma Amar Coleman and Director of Marketing and Public Relations Anthony Winchatz joined the assembly line and shared accounts of the importance of such donations to victims of domestic abuse.

The Resource Center distributed approximately 100 “Cozy Comfort” bags to clients in need thanks to the philanthropy of Bloomberg LP.

NJ Radio 101.5 FM—A Champion in Our Adopt-A-Family Program

HILLSBOROUGH, NJ—Ray “the Prize Guy” Handel pulled up in a large box truck, opened the back and revealed a “mountain of boxes” that required the help of our staff to unload. These were holiday gifts destined for client families through our holiday time Adopt-A-Family program.

NJ 101.5 FM radio has been joining us in the

program for the past several years. This year, they “adopted” twenty families, providing gifts ranging from toys to clothes to household appliances and more.

For the folks at the radio station, it’s “no thanks needed,” but they know how much their efforts are appreciated by the smiles on the faces of our staff.

Thank you nonetheless.



NEW JERSEY 101.5 FM RADIO



CHILDTIME Learning Center in Somerset are Inspired by Reading The Mitten Tree



SOMERSET, NJ—Pre-school children at CHILDTIME Learning Center in Somerset found inspiration to provide warmth and comfort for others after reading The Mitten Tree by Candace Christiansen.

Teacher Judy Sundelof and Director Claudia Vernioa worked with the

children as they collected mittens, gloves and scarves to hang on their mitten tree, to donate to others who might need something special to keep them warm.

Students Julia Stuve, Megan Caputo, Maddy McKinley, Alex Seigel and Brennan Sundelof (pictured left) were on

hand to show off the tree covered with mittens and gloves to donate to our safe house for any children who were there who did not have their own gloves to keep their hands warm.

The lessons learned from children can inspire us all!

A Very Special Holiday Celebration



Hillsborough High School Student Council helps organize the party, games and gift giving to make the holidays fun for all the client children who attend.



Student Council members and J&J staffers have plenty of crafts and games available for the kids to enjoy.



RCS staff members prepare Just Subs sandwiches for the over 125 party guests.



The J&J IT staff from Skillman are ever ready to make it a party, Santa comes along too!

OUTREACH CENTER—Each year, the staff at the Resource Center of Somerset tries to make sure the children who come for services have the opportunity to celebrate the holidays and put aside the stress from living in an abusive situation they face every day.

Some very special community partners join in and help assure that this is an experience those children will fondly remember.

The Hillsborough High School Student Council works throughout the year to fund raise for the party. They raise money to buy presents for the children, and the moms too, and solicit local businesses for contributions that can make the party festive.

The staff from Johnson & Johnson IT group in Skillman has been helping out for the past three years, donating J&J products for gifts and helping with the games and crafts at the party. This year, a music trio of J&J staffers

played live music and the kids danced the night away.

Our thanks go out to our community sponsors for their generosity in helping make this holiday celebration a success.

Lidia D'Armiento—volunteer DJ

Goya Products

Hillsborough High School Student Council

Johnson & Johnson, IT—Skillman

Just Subs, Hillsborough

NEC Liquors, Hillsborough

The Ramallo Family

and the entire staff at the Resource Center.



In Her Own Words: A Survivor's Story

Myrna Torres gave the following speech at the Resource Center's Candlelight Vigil in October 2011, describing how she survived domestic violence and moved on to become a service provider. She now volunteers as a co-facilitator for one of the agency's Psychoeducational Groups. Myrna is very comfortable with her empowerment and proudly sets aside her confidentiality.

My journey and experience with domestic violence began as a child, when I first witnessed my father arriving in the early hours of the morning, sometimes drunk, and at other times just being a bully. I wasn't going to let this man hurt my mother, and from the age of eight I began protecting my mother from him. I would either pick up the broom and stand in front of her so my father wouldn't lay his hands on her, or I would run around the block to get the police officer standing by the phone that was connected to the police station. In the 60's every corner in New York City had a phone that was painted green with the letters spelling out "POLICE PHONE".

As a child I didn't understand what was going on, but I was clear that I wasn't going to let my father hurt my mother. My mother was a hard working business woman taking care of the household because my father was not. She was forced to leave my father on various occasions, and even went to court to get a divorce in 1963. But she decided not to pursue it because she felt my brother and I needed a father.

As a Latina woman raised in Brooklyn in a very strict home, I was led to believe that when you get married you are supposed to tolerate anything and everything that goes on in the marriage, and respect your vows and the sacrament of marriage. But when I began experiencing abuse from my ex-husband, I was confused. Deja vu was hitting me right smack in my face. I asked myself, "Was this me or was this my mother's nightmare?"

When I came back to earth and realized that this was my very own nightmare, I couldn't believe it. I have always been an assertive, independent woman, but this man managed to break me a little at a time in very subtle ways. I began doubting myself and questioning whether I was the cause of the problem. I felt I had no voice, and if I did speak no one would listen. I felt alone, trapped, and lost. I didn't understand what was going on because I thought that a husband and wife were a team to support one another, but what I was living was something different.

I never knew what insecurity felt like until I began being abused. The abuse became obvious when I started losing weight, and cut my hair into a new and different style. My ex-husband's insecurities began to manifest. He would ridicule my hair or make negative statements about my clothes, commenting about how awful I looked in a dress or skirt. The verbal humiliations continued. He also began embarrassing me in front of

our friends with his comments.

This continued for awhile until he physically attacked me. One day in our friend's house, he became angry- until this day I don't know why- and he grabbed me by my neck and flung me like a rag doll across the living room. I left him, but returned thinking things would change. Three times I left and returned, but the same vicious cycle happened all over again.

Reality hit me when he finally struck me. I thought the children didn't hear all the commotion that was going on because they were in bed, but when I heard the children crying out for me, it became evident that enough was enough. I told him he had to leave, which he did. I contacted a domestic violence agency to ask questions, and it was at that moment I realized that I was being abused. Within 24 hours I got a restraining order and changed the locks on my door. Since then I haven't looked back.

Here I am today sharing my story. The path in my journey was a challenging one, but I won. I fought back and survived. My children were raised in a safe and healthy environment. I finished my degree at Rutgers University and I'm presently working in a program with pregnant moms and their children.

Today I understand why I experienced this craziness. It made me a stronger woman. I use my experience by working as a volunteer with the Resource Center, facilitating a support group with survivors



of domestic violence. I enjoy working with the women every week. We discuss different topics and issues relating to domestic violence and the women discover ways to survive their experiences. They leave feeling grateful that they have a safe place to tell their stories without judgment and with support.

To end my story I would like to leave you with a few lines of a poem written by Maya Angelou.

Phenomenal Woman:

Pretty women wonder where my secret lies.

I'm not cute or built to suit a fashion model's size

But when I start to tell them,

They think I'm telling lies.

I say,

It's in the reach of my arms,

The span of my hips,

The stride of my step,

The curl of my lips.

I'm a woman

Phenomenally.

Phenomenal Woman,

That's me.



Introducing: Marianne McCrone

BA, MS—Monmouth University

Adult Counselor
Individual & Groups
Four years with Resource Center

Marianne completed her counseling internship with the Resource Center before joining the staff in 2008. She also has experience in the mental health field working with at-risk youth in the area of addictions and chronic mental illness. She is currently enrolled in the nursing program at RVCC to qualify as a Psychiatric Nurse Practitioner.



Group Counseling

**Marianne McCrone, MS, NCC, LPC, Adult Counselor
Resource Center of Somerset**

The Resource Center of Somerset provides a variety of group counseling services for adults and children as part of its Outreach program. Group therapy is an effective way to help clients move along in the healing process. Groups are aimed at providing support, receiving feedback and information from others, communicating effectively, and providing survivors with the feeling of "you are not alone." We have a variety of groups ranging from adult therapy groups to children's creative arts groups.

We offer Psychoeducational groups for adults in both English and Spanish which focus on educating clients about domestic abuse and sharing personal experiences. This is a structured group that is run for eight weeks at a time, discussing a different

topic each week: power and control, cycle of violence, equality and healthy relationships, assertiveness, self-esteem, boundaries, grief and loss, and warning signs for potential abuse.

We also offer a Psychotherapy group for adults in both English and Spanish. The emphasis of this group is on exploring and processing emotions. The psychotherapy group is less structured and not necessarily issue specific each week. This group allows clients to explore their feelings, become more self-aware, and receive support from other group members.

In addition to groups for adults, we also offer a variety of groups for children, ranging from 3 – 13. The overall goal of our children's groups is to provide a safe

environment where kids can effectively identify and express their emotions. Many of our children's groups incorporate art and play therapy which provide a way for them to communicate and discover who they are.

All of the groups are run by staff members, with the assistance of interns and volunteers as co-facilitators. The Resource Center's group program is continuing to grow and expand. We anticipate new and beneficial groups to open up in the future.



Susan Kalison Karp Resource Center of Somerset President—Board of Trustees 2012

The Resource Center of Somerset is pleased to welcome Susan Kalison Karp as the new President of the Board of Trustees as she takes office for a two-year term.

Sue lived in Essex County and served as an on-call Domestic Violence Response Team volunteer advocate with the Millburn Police Department. When she moved to Bedminster in 2003, Sue wanted to continue her volunteer efforts working with victims of domestic abuse

and found her way to the Resource Center of Somerset.

Sue joined the Board of Trustees in 2007 and chaired the Board Development sub-committee and was recently First Vice President and a continuing member of the executive committee.

"It is now an exciting new prospect to begin my term as President of the Board," Sue remarked. "I look forward to meeting new people, and

working with the agency as we carry on our programs to empower clients and continue to find opportunities to support our mission of peace at home."

Sue is employed at Chubb and Son, Whitehouse Station, NJ as an Assistant Vice President. She is a relationship manager in the Integration Competency Center, part of Chubb's Enterprise Architecture, working on global projects with the Chubb technology groups in all their business zones.





And the winners are...

Somerset County non-profit organizations benefit from the Someys, a new youth video-produced program

Video dealing with teen dating abuse is awarded the Grand Prize!

Excerpts reprinted from *The Courier News* and www.mycentraljersey.com

RVCC, BRANCHBURG—December 10—

Some 60 Somerset high school and middle school students participated in the video contest which was launched by Leadership Somerset 2011 as a way to help raise awareness about the county's non-profit and government resources. The contest and the award program was sponsored by Allstate New Jersey Insurance, Advanced Solar Products, Ethicon, Raritan Valley Community College, and The Somerset Patriots, according to Alice Condo, public relations lead for the Somey's Team.

A group of high school students from Montgomery High School walked down a red carpet to accept the award of first place for their PSA that focused on the

signs of abuse and the work of the Resource Center of Somerset. The students won in the category of Health and Wellness, as well as the grand prize.

Both the Resource Center and the group of students were presented with \$250 checks.

The winning team, the "The M.A.S.K. Theater" from Montgomery High School included, Erick Alvarenga, Alex Arbelaez, Joy Auerbach, Nicole DeSario, Lauren Gottlieb, Alyssa Kingkiner, Christina Maslyn, Melissa Maslyn, Robyn Moyer, Maggie O'Brien, Meaghan Pellizari, Adam Rosser-Bright, Erik Schwarte, Megan Summers, and Austen Wang Bailey.

DeSario, the president of the MASK Theater at the school, was the video's director.

"In our video we highlighted the issue of teen relationship abuse. We tried to convey the importance for teenagers to recognize the 'Signs of Abuse' to avoid becoming involved in an abusive relationship," DeSario said.

"The Resource Center of Somerset has



been an active force in making MASK Theater a success. It has provided members with education (so we are qualified to properly aid others) and continues to do so."

"I know many who have used their care in the past," she added. "The work that they do for the community and the help that they've provided MASK really needed to be recognized."

The group worked on a tight deadline to produce the video, which was shot on an iPhone.

"MASK had to meet several days consecutively to brainstorm," she said. "Over the weekend there was a terrible snow storm that knocked out the

electricity. My mother and myself were working for many hours constructing our literal 'signs' of abuse by candlelight. ... the experience was stressful and arduous, but the group of kids are so dedicated and motivated that they make every experience a great one."

She added that Anthony Winchatz, the director of marketing and public relations at the Resource Center, has contacted Premiere Media of Hillsborough, and arranged for the video to be re-shot in HD quality under her direction.

Why the Someys?

The passion exhibited by MASK to create the video is exactly what the creators of the Someys were aiming to inspire when they devised the project.

"Our Leadership Somerset team was looking for a way to get young people involved in giving back to the community and helping non-profits. We bounced a lot of ideas around, and thought it might be inspiring if the kids involved would have an opportunity to win an award for their work — like an Emmy Award — complete with a red carpet event," said Deb Cummins, Leadership Somerset Somey's Team Leader.

You can see the award-winning video by visiting the MASK website:

<http://www.masktheater.blogspot.com/>

Volunteer Spotlight— Monique Schobert Children's Therapy Assistant



The Resource Center of Somerset has been very fortunate to have Monique Schobert as a regular volunteer in the children's therapy programs over the last three years. Our Children's Program offers individual therapy, group therapy, family therapy, and parent support to families affected by domestic violence within Somerset County. Many times, the children who come to our program have severe behavioral issues due to the abuse they have witnessed and endured, so it is a bit of a challenge to match volunteers with this area of need. Monique's willingness to roll up her sleeves and dive into working with this population has been a true gift to our clients. She is simply amazing with our child clients and we are so lucky to have her consistent support.

Monique grew up in Lorraine, France—this is the city where the name of the Quiche Lorraine is derived! She still has family in France and continues to visit them regularly. Monique and her husband like to travel, and the Resource Center staff are always excited to hear about where they are going and what she experienced. Monique likes to learn about other cultures and how other people live.

Monique came to United States to study at the Worcester Polytechnic Institute in Worcester, Massachusetts where she received her PhD in Chemical Engineering. Monique also has an MBA. In 1978, Monique moved to New Jersey where she worked at a variety of places including AT&T, Mobil Oil, and Johnson & Johnson. She currently works at Bristol-Myers Squibb as an Associate Director for Patient Assistance programs. Within this important position, she helps low income uninsured individuals receive free medication.

Monique and her husband found themselves with some spare time, so they decided it would be a good idea to give back to their community. While seeking a way to volunteer, a neighbor suggested the Supportive Parent Aide Network (Project SPAN) to Monique. Monique and her husband were trained with SPAN and

worked with the Big Brothers/Sisters program to help children affected by domestic violence. Monique said that her husband had been working with SPAN until last year and had recently been



recognized as a United Way Home Town Hero for his participation with this program. Through SPAN, Monique was first placed at Women Aware, the domestic violence program that services Middlesex County. She volunteered with the children's art therapy group which helped children deal with their experience within a home affected by domestic violence.

Three years ago, The Resource Center of Somerset was very lucky to receive a request from Monique asking if our program could use her as a volunteer. She began her work with us providing childcare to children during parent support sessions and later began helping the children's counselors run therapy groups for our youngest clients, aged 3-6 years old. The Resource Center staff also would like to credit Monique with being at the right place at the right time with her expertise in engineering, when one day a

child locked himself into a bathroom by accident during a group therapy session. Monique calmly got out a multipurpose tool and was able to remove the door handle while the staff watched her in awe. This quickly gained her "hero" status at the Resource Center.

Her experience and passion for working with children dealing with domestic violence is clear. Alexis Walczak, children's counseling intern, stated: "Monique is a very talented person in many different aspects. She has a gift for working with children. She is patient, kind, encouraging, generous, and reliable. Needless to say, the kids look forward to spending time with her. Monique is truly a valuable asset to the Resource Center!" Mary McGloughlin, the Resource Center's child counselor notes: "We are very protective of our child clients. We want them to have a safe experience here, where they know they will be heard and feel safe with the volunteers and staff working with them. Monique has an incredible quality of helping clients gain trust in her and the therapy process. And, if she ever has to miss a week, the kids really notice her absence and ask us if she is okay and if she will be coming back soon. We are so very lucky to have Monique as a member of our Children's Program Team."

Monique stated about her experience volunteering with the children's program at the Resource Center: "It is fun, they are great, great kids. Kids seem to know at even a young age that despite the domestic violence they have experienced at home, it is not okay to use violence. They are so cute and loveable, and really have a need to feel loved. They need someone to help them. They remind me of how lucky I have been in my life."

Thank you Monique for all that you do for us at the Resource Center. We are so lucky that we can share your kindness with our youngest survivors of domestic violence.

Resource Center of Somerset
427 Homestead Road
Hillsborough, NJ 08844

Hotline: 866-685-1122
Phone: 908-359-0003



Visit Us on the Web

www.resourcecenterofsomerset.org

Upcoming Events

Jazz Brunch at Verve

Verve Lounge & Bistro
Somerville, NJ

April 15, 2012

24th Annual

Derby Day Party

Fiddler's Elbow Country Club
Bedminster, NJ

4:00 PM

May 5, 2012

19th Annual

Fore Love Golf Open

Featuring

The Mayors' Challenge

Fiddler's Elbow Country Club
Bedminster, NJ

10:00 AM



*Our mission is to end domestic abuse
and empower victims by providing
protection, education and resources.*

Services include::

- Emergency Shelter
- 24-Hour Hotline
- Transitional Housing
- Legal Advocacy
- Domestic Violence Response Teams
- Outreach Counseling
- Community Education
- Services for Adults & Children

427 Homestead Road • Hillsborough, NJ 08844-1400 • 908-359-0003

Our 24-Hour Hotline • 866-685-1122

www.resourcecenterofsomerset.org

For additional information on sponsoring or making a contribution for one of our upcoming events, Contact

Anthony Winchatz, Director of Marketing and Public Relations
(908) 359-0003, ext. 223

We're Going Green! We always want to provide maximum value to our supporters and increase our available funds for programs and services. Therefore, beginning in October with our Fall 2012 issue of *Help & Hope*, we will be completely digital. Your copy will be sent to you by email and also available on our website, www.resourcecenterofsomerset.org